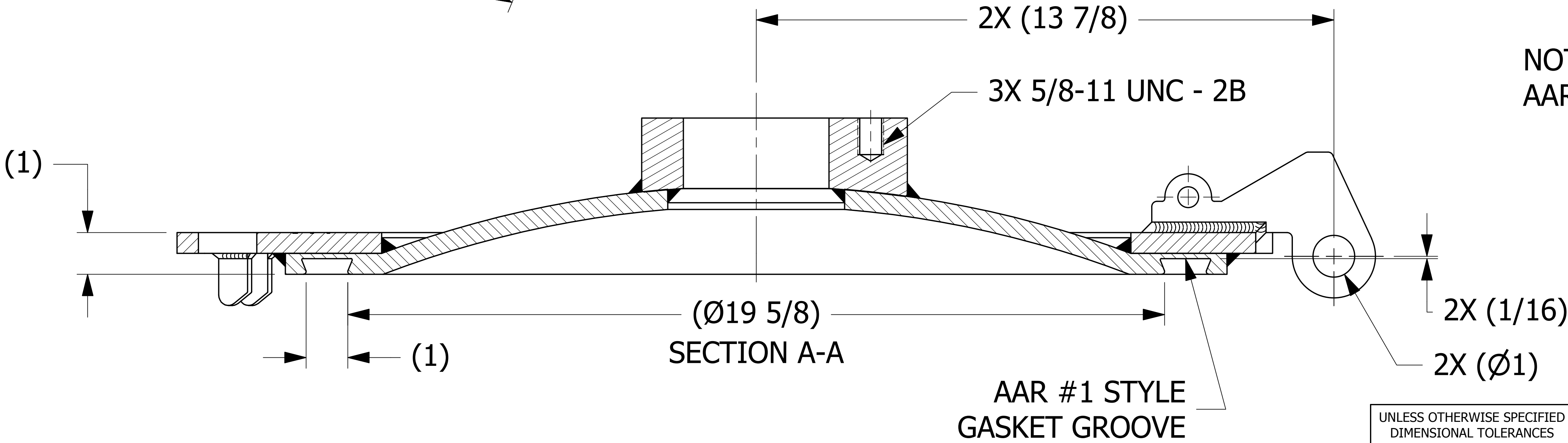
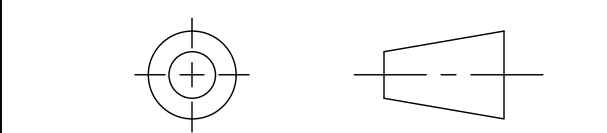


VIEW B-B
SCALE 1 : 1




NOTE:
AAR APPROVAL # E-182113.

UNLESS OTHERWISE SPECIFIED DIMENSIONAL TOLERANCES	
FRACTIONAL:	±1/16
X.XX:	±.03
X.XXX:	±.015
ANGULAR:	±1°
DEBURR ALL SHARP EDGES. ALL MACHINED SURFACES TO HAVE A 125 RMS FINISH UNLESS NOTED OTHERWISE.	
THIRD ANGLE PROJECTION	



DRAWN BY:	JJK
CHECKED BY:	WRB
PROTOTYPE BY:	JJK
PROTOTYPE DATE:	10/15/2014
APPROVED FOR PRODUCTION BY:	CHL
PRODUCTION DATE:	

E	WEB	4-30-19	REMOVED QAP4A-1 NOTE; Q-2.15.7 WAS QAP4C-1; D-008 WAS DSS 12; ADDED D-005 NOTE; AAR # WAS E-089005
D	RJP	11-15-17	HINGE WELD WAS 3/8"; 4.00 +.00/-.06 WAS 4.00; ADDED NOTE 6; ADDED "SALCO" TO ENGRAVING
C	WEB	9-8-17	REPLACED TMC202S6 & TMCDQIS6MF W/ TMC2026, TMCHS4A W/ C42806, UPDATED VIEWS AND NOTES
B	RJP	2-18-15	UPDATED GEOMETRY OF TMC202S6
A	JG	10-24-14	RELEASED FOR PRODUCTION
REV	BY	DATE	DESCRIPTION

 SALCO PRODUCTS, INC.			
PART NAME: MANWAY COVER 20" 8-BOLT			
MATERIAL: 316 SS			
PROJECT #:	R141015	SHEET #:	1 OF 1
DRAWING #:	E40184	PART #:	TMC2026
		SCALE:	2:3